

Connah's Quay Low Carbon Power

Environmental Statement Volume III Figure 8-28: FEED 1 Unabated Scenario, Nitrogen Deposition Process Contribution (Grassland)

Planning Inspectorate Reference: EN010166

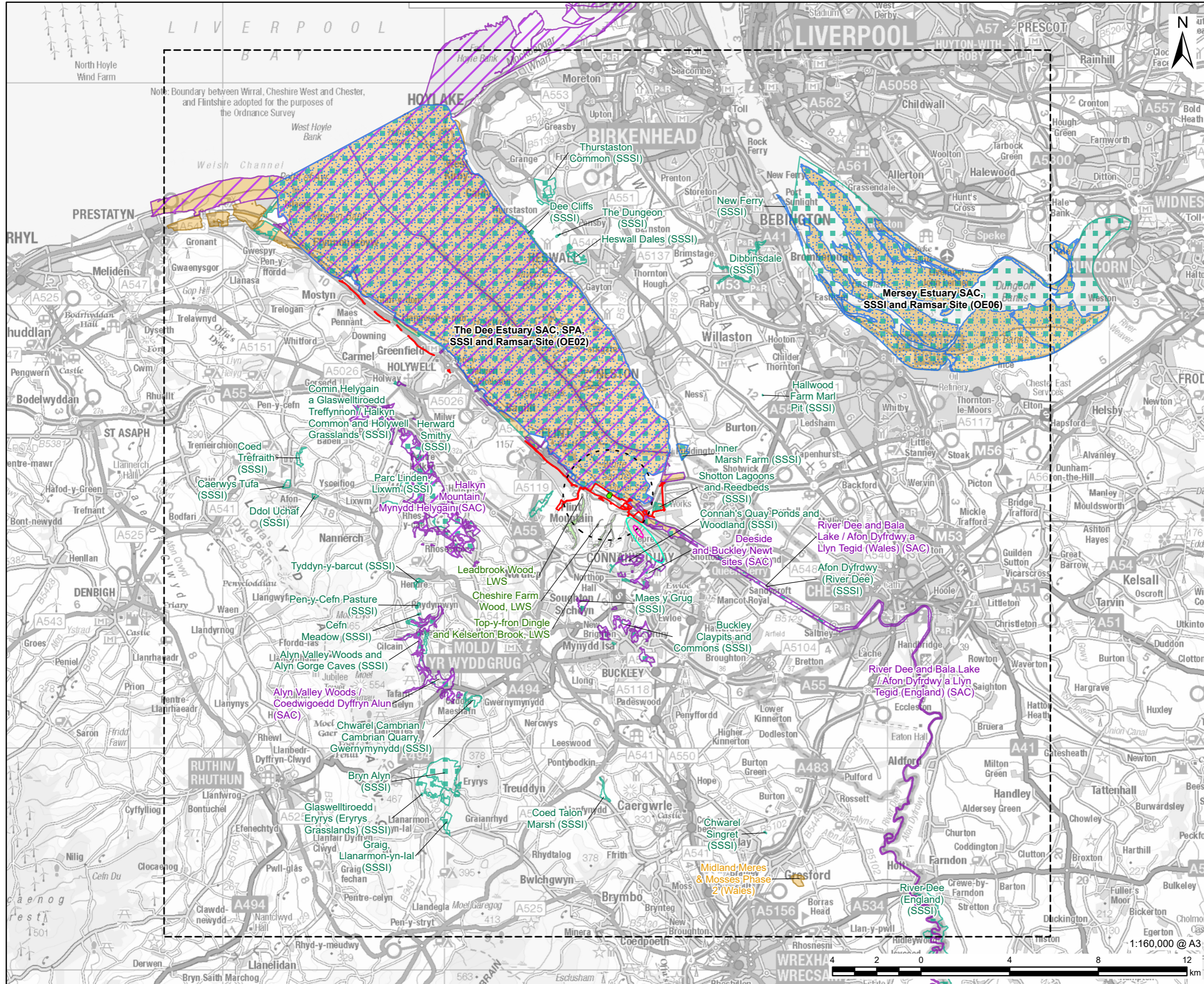
Document Reference: EN010166/APP/6.3

Planning Act 2008 (as amended)

Infrastructure Planning (Applications: Prescribed Forms and Procedure) Regulations
2009 - Regulation 5(2)(a)

Revision 01

March 2026



PROJECT
Connah's Quay Low Carbon Power

CONSULTANT
 AECOM Limited
 The Colmore Building
 Colmore Circus, Queensway
 Birmingham, B4 6AT
 www.aecom.com

- LEGEND**
- Order limits
 - Model Domain
 - Feed 1 - Bypass Stack Location
 - 2km Buffer of the Absorber Stack
- Nitrogen Deposition Process Contribution (Grassland) (% of the CL)**
- 1% of the 5 kgN/ha/yr Critical Load
 - 1% of the 6 kgN/ha/yr Critical Load
- Ecological Sites**
- Special Protection Area (SPA)
 - Special Area of Conservation (SAC)
 - Site of Special Scientific Interest (SSSI)
 - Ramsar
 - Local Wildlife Site (LWS) [1]

NOTES

© Crown Copyright 2025. All rights reserved. Ordnance Survey Licence AC0000808122. Contains OS data © Crown copyright 2025. Contains Natural Resources Wales information © Natural Resources Wales and Database Right. All rights Reserved. Contains Ordnance Survey Data. Ordnance Survey Licence number AC0000849444. Crown Copyright and Database Right. © Natural England copyright. Contains Ordnance Survey data © Crown copyright and database right 2024. Records provided by Cofnod for Ecological Records Search Request. © North Wales Environmental Information Service. [1] Locally designated sites are only shown within 2km of the Absorber Stack Locations.

ISSUE PURPOSE
 Environmental Statement

DATE
 March 2026

PROJECT NUMBER
 60768754

FIGURE TITLE
 FEED1 Unabated Scenario, Nitrogen Deposition Process Contribution (Grassland)

FIGURE NUMBER
 Figure 8-28

This drawing has been prepared for the use of AECOM's client. It may not be used, modified, reproduced or relied upon by third parties, except as signed by AECOM or as required by law. AECOM accepts no responsibility, and denies any liability whatsoever, to any party that uses or relies on this drawing without AECOM's express written consent. Do not scale this drawing. All measurements must be obtained from the stated dimensions.